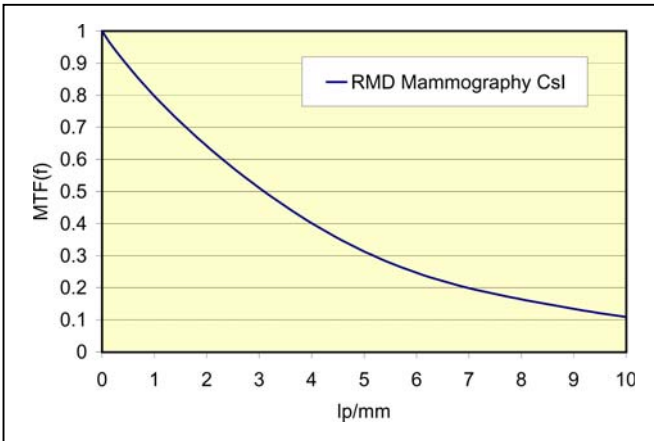
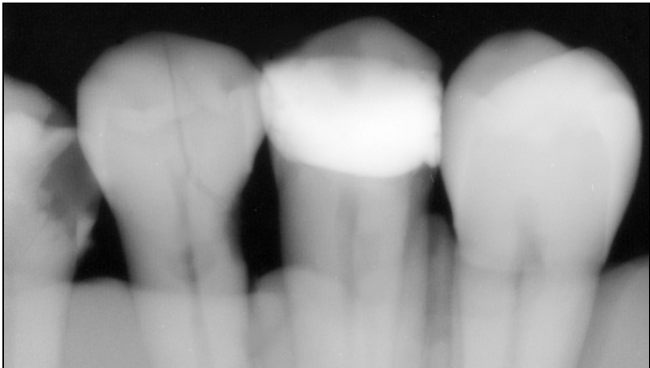


**Products:
Cesium Iodide Screens**

Intra-Oral Radiology

An RMD Cesium Iodide(Tl) screen for intra-oral radiology produced the image at right. RMD screens have good contrast in the diagnostic region of 2.5 to 6 line pairs/mm and spatial resolution of 10% MTF @ 10lp/mm. Screen Models include a substrate that is either a fiber optic plate or graphite.



Mammography

RMD Mammography screens are produced for the lower-energy KVP energies of mammography and maintain high sensitivity, low noise power spectrum, and high detective quantum efficiency. Preferred substrate is graphite. Performance of RMD CsI is on graphite is shown in at right. Model minimum guaranteed performance of 10% MTF @ 8 lp/mm measured on RMD reference system.

Micro-CT

RMD Cesium Iodide (TI) screens for micro-tomography have a fiber-optic substrate that may be coupled to the customer's fiber-optic taper.

General Radiology

This Model has an active area of 45 cm x 45 cm and a graphite substrate. Screen performance target is a high spatial resolution (guaranteed at least 10% MTF at 3 lp/mm). Light output is at least 1.5 x Lanex Regular, measured at 70 kVp x-ray and 2.7 mm Al filter on RMD reference system of fiber optic block to CCD camera.



Contact RMD

The above screens are offered for sale by RMD Instruments, LLC. Please contact RMD if you are interested in receiving a quotation for one of these screen models.